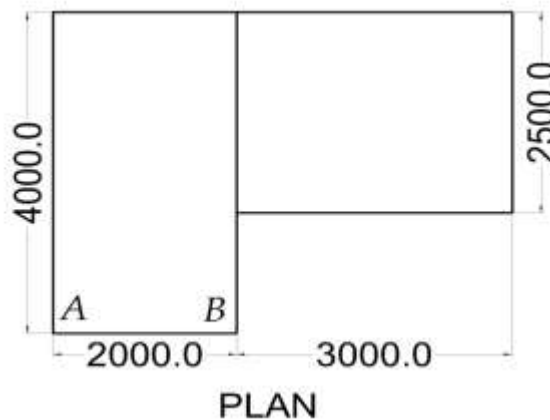
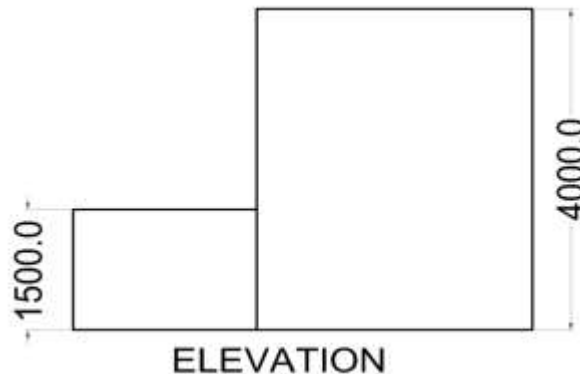


### Assignment - 1 Perspective Drawing

- Q-1 Define the following terms:  
(a) Picture plane (b) Station point (Eye point) (c) Base line (Ground line)  
(d) Horizon (e) Center of Vision (f) Line of sight (g) Angle of vision
- Q-2 Differentiate between one point and two point perspectives.
- Q-3 Draw one point perspective for the object shown in figure. The edge AB touching the picture plane and take distance of observer as 12000mm from picture plane and height of observer 2000mm from ground plane.
- Q-4 Draw one point perspective for the object shown in figure. Take corner A touching the picture plane, and edge AB making angle of  $30^\circ$  with the picture plane and take distance of observer as 12000mm from picture plane and height of observer 6000mm from ground plane.



**Assignment - 2**  
**Town Planning**

- Q-1 Briefly explain the town planning of Indus valley civilization.
- Q-2 Explain the term town planning. State objectives of town planning.
- Q-3 State and explain Principles of town planning.
- Q-4 Discuss various surveys conducted for town planning scheme.
- Q-5 Write short note on: (1) Types of Growth of towns, (2) Different Urban road patterns, (3) Master Plan
- Q-6 What is neighborhood planning? Explain its principles.
- Q-7 Explain the causes of slums. Also discuss different methods of slum clearance.
- Q-8 Discuss various aspects of Zoning.
- Q-9 Give characteristics of Central Business District.

**Assignment-3**  
**Cad Software Commands**

- Q-1 Write the functions/use of below CAD commands:

L, C, PL, UNITS, REC, POL, ARC, ELLIPSE, REG, CO, ARRAY, TR, OP, DS, F, T, SC, B, ST, X, CHA, LA, PTYPE, DIV, SKETCH, BREAK, DLI, MA,

**Assignment-4**  
**Sketch Book Drawing**

- Q-1 Draw One point perspective of the given figure no. 1 to 3
- Q-2 Draw Two point perspective of the given figure no. 1 to 3

Figures are on Page-3

